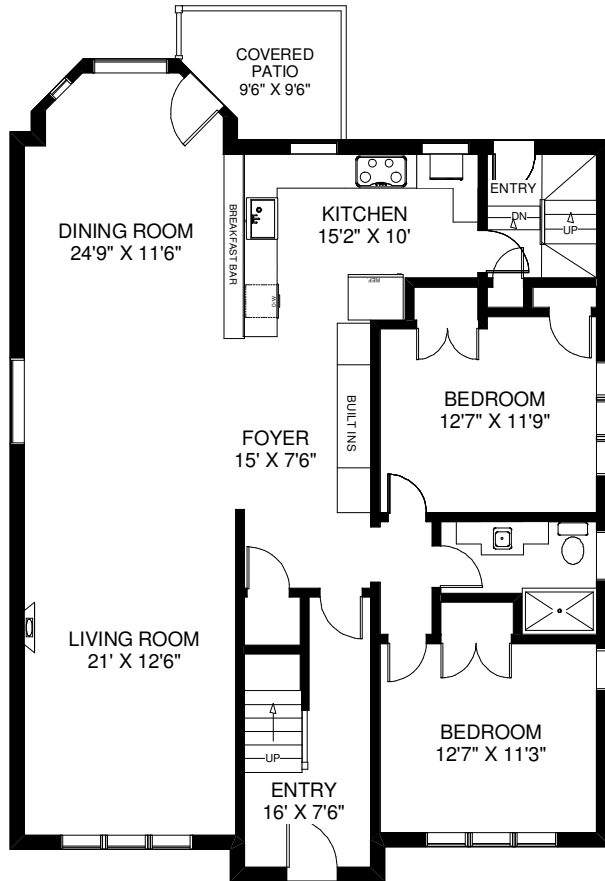
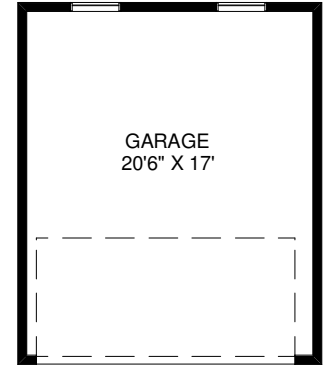
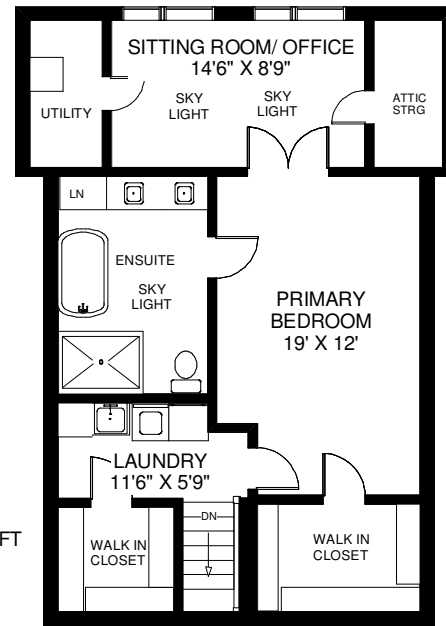
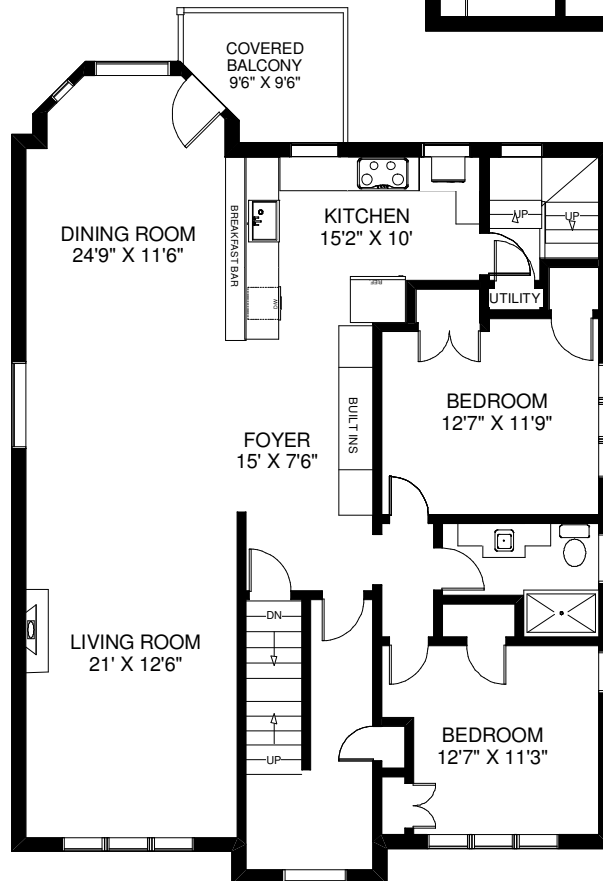


# 324 RIVERSIDE DRIVE

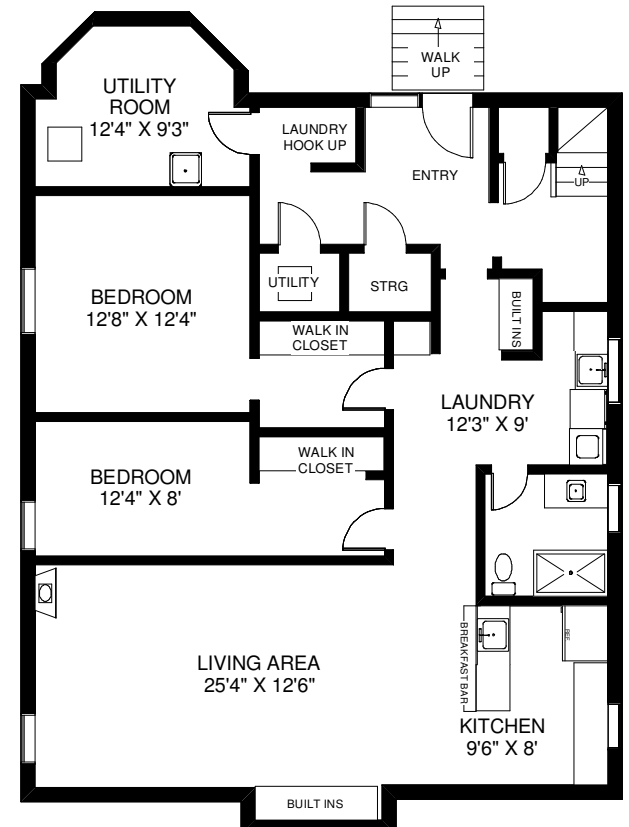
CEILING HT 8'  
THIRD FLOOR  
APPROXIMATELY 870 SQ FT



CEILING HT 8'3"  
MAIN FLOOR  
APPROXIMATELY 1,600 SQ FT



CEILING HT 8'3"  
SECOND FLOOR  
APPROXIMATELY 1,600 SQ FT



CEILING HT 6'10"  
LOWER FLOOR  
APPROXIMATELY 1,600 SQ FT